

#### 4.11 Cafés, bistros

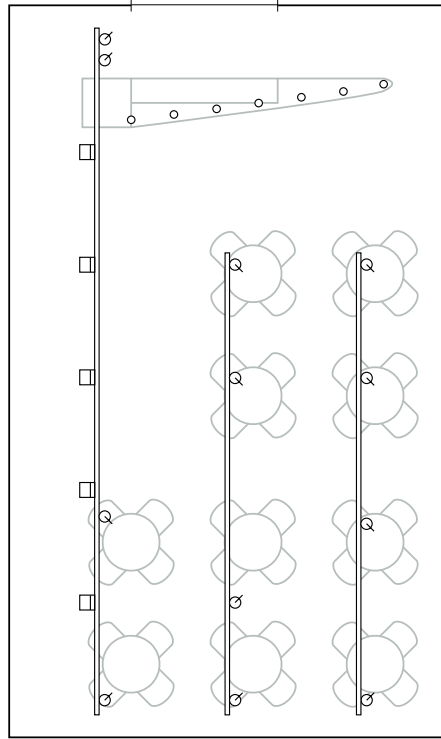
The term café, or bistro, covers a variety of catering establishments that offer a service somewhere between the functional canteen and the up-market restaurant; a spectrum ranging from fast food restaurant to ice-cream parlours and cafés to bistros. The clientele comprises small groups who tend to stay for longer periods of time, using the establishment as a meeting place as well as somewhere to eat.

In contrast to the canteen, the lighting required in this case is of a more prestigious nature, the lighting level on the whole lower. The interior design and the accentuation of the individual tables is more important here than efficient, overall lighting. The objective nevertheless is not to produce very low ambient lighting with strongly illuminated and well defined individual areas (tables); the entire space should be generally bright and friendly and promote a communicative

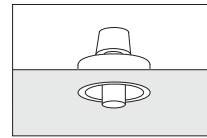
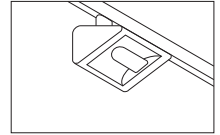
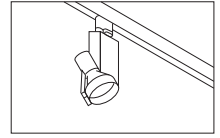
atmosphere. The actual lighting design concept depends to a large extent on the required atmosphere and the target clientele. It may range from uniform lighting concepts to the integration of dramatic forms of lighting and lighting effects.

Cafés and bistros are open throughout the day, which results in different lighting requirements by day and by night. It is therefore advisable to develop a concept that allows different components to be switched and dimmed separately, or to include a programmable lighting control system.

Three rows of track are proposed to run the length of the space. Wallwashers are mounted on the track nearest the wall, producing reflected light for the ambient lighting. Spotlights are mounted on the track aligned with the position of the tables. The counter is accentuated by a row of decorative downlights installed in a suspended ceiling.

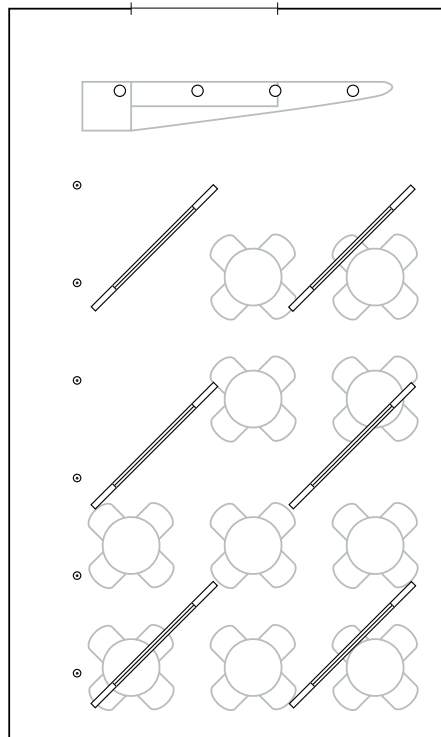


Track with spotlights and wallwashers.

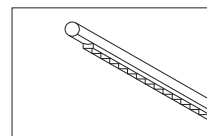
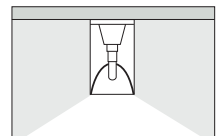
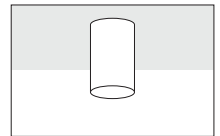


Decorative recessed downlight for low-voltage halogen lamps.

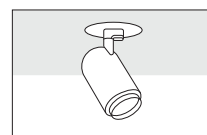
Ceiling-mounted light structure with direct luminaires arranged in a diagonal pattern across the ceiling provides the lighting on the tables. Surface-mounted downlights accentuate the counter. A series of singlets along one side wall allow the installation of spotlights to pick out focal points.



Surface-mounted downlight for halogen lamps.



Surface-mounted light structure with direct luminaires for fluorescent lamps.



Singlet for spotlights.